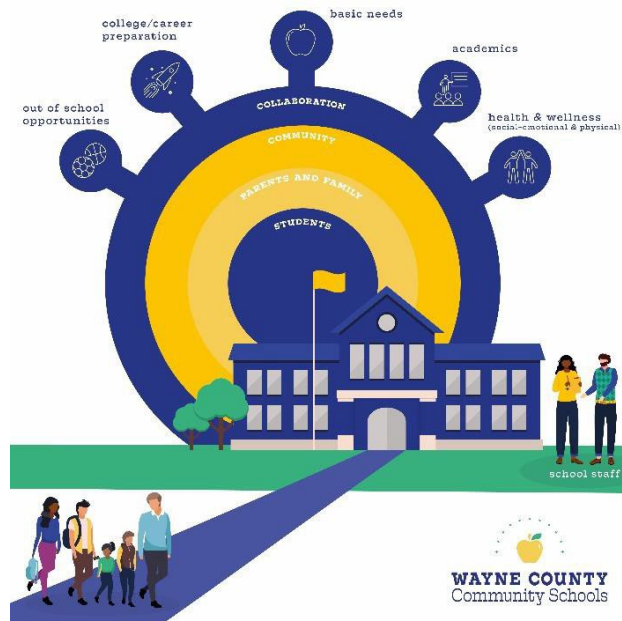


Wayne County Community Schools Resource Map: 2022-2023



Last updated 10.3.23

Next Update – May 2024

Wayne County School Districts

Table of Contents

Clyde Savannah ** Page 3**

Gananda ** Page 4**

Lyons ** Page 5**

Marion ** Page 6**

Newark ** Page 7**

North Rose-Wolcott ** Page 9**

Palmyra-Macedon ** Page 10**

Red Creek ** Page 12**

Sodus ** Page 13**

Wayne ** Page 15**

Williamson ** Page 16**

Wayne Education Center – WFL BOCES ** Page 17**

Clyde-Savannah Central School District

Clyde-Savannah School Administration:

Clyde-Savannah Elementary School Main Office: 315.902.3100
Elem. Principal: Jennifer Mackey jennifer.Mackey@clydesavannah.org 315.902.3100
Assistant Principal: Erin Wood erin.wood@clydesavannah.org 315.902.3100
Clyde-Savannah Jr. High School Main Office: 315.902.3200
Jr. High Principal: Justin Fries justin.fries@clydesavannah.org 315-902-3200
Clyde-Savannah High School Main Office: 315.902.3050
High School Principal: Dr. Craig Pawlak craig.pawlak@clydesavannah.org
Dir of Special Ed and Pupil Personnel Services: Chris Nicol chris.nicol@clydesavannah.org
JR. SR. HS Dir. of Curriculum: Holly Drahms Holly.Drahms@clydesavannah.org

Clyde-Savannah in House Support

Elementary School counselor: Justin Allen Justin.allen@clydesavannah.org
Elementary Social Worker-Joseph Dewolf Joseph.dewolf@clydesavannah.org
Elementary School Psychologist: Sydni Verbridge sydni.verbridge@clydesavannah.org
Elementary School Psychology Intern: La'Ronica Craven laronica.craven@clydesavannah.org
Preschool Coordinator: Amy Fisher amy.fisher@clydesavannah.org
Elementary Nurse: Kelly Smart, RN. kelly.smart@clydesavannah.org
Elementary Nurse: Wende Edwards, LPN wende.edwards@clydesavannah.org
MS Registered Nurse: Andrea Roelle RN andrea.roelle@clydesavannah.org 315-902-3020
Jr. HS Counselor: Barbra Poerio Barbra.Poerio@clydesavannah.org
Jr. Sr. HS Psychologist: Megan Furman megan.furman@clydesavannah.org 315-902-3050
HS Social Worker: Cari VanStrien cari.vanstrien@clydesavannah.org 315-902-3050
JR. SR. HS MTSS Coordinator: Andrew Pirrello Andrew.Pirrello@clydesavannah.org
Physical therapy: Morgan Suslik morgan.Suslik@clydesavannah.org
Occupational Therapy: Allison Williams Allison.williams@clydesavannah.org
Speech Language: Katrina Briggs Katrina.briggs@clydesavannah.org
ENL: Teresa Grigg teresa.grigg@clydesavannah.org
PT ENL : Melissa Ridley Melissa.ridley@clydesavannah.org

Clyde-Savannah Co-Located Services

SOAR/SPAN – Amy Bullard ab2832@cornell.edu Jen Peeso jp2538@cornell.edu
Peaceful Schools – Dianna Page, Social Emotional Learning Interventionist
Wayne Behavioral Health Network – Kathy Lochner Kathy.Lochner@clydesavannah.org or contact WBHN Intake Coordinator at 315-946-5722. You can also access outpatient services at our clinic at 1519 Nye Road, Lyons by contacting the above number.

Gananda Central School District

Richard Mann Elementary School..... Main Office: 315.986.3521 x1511

Principal: Katy Lumb klumb@gananda.org

Assistant Principal: Melissa Reeves mreeves@gananda.org

Middle School Main Office: 315 986.3521 x2423

Principal: Elliot Butt ebutt@gananda.org

Assistant Principal: Bob Caulkins bcaulkins@gananda.org

Ruben A. Cirillo High School Main Office: 315 986.3521 x3154

Principal: Chris Wipple cwipple@gananda.org

Assistant Principal : Mairi Greibus mgreibus@gananda.org

Gananda In House Support

Richard Mann Elementary School Office: 315 986-3521

Counseling: John Strachan jstrachan@gananda.org

Social Work: Sue Thoen sthoen@gananda.org

Psychologist : Jackie Pedulla jpedulla@gananda.org

Nurse: Deanna Hendricks LPN: dhendricks@gananda.org, Lindsay Poh lpoh@gananda.org

Gananda Middle School Office: 315 986-3521

Counseling: Ariana Nadir anadir@gananda.org

Social Work: Sue Thoen sthoen@gananda.org

Psychologist: Caryn Armstrong carmstrong@gananda.org

Nurse: Kim Roach RN kroach@ganana.org

Ruben A. Cirillo High School Office: 315 986-3521

Counseling: Kristen Kelleher kkelleher@gananda.org & Calisha Bertram cbertram@gananda.org

Social Work: Sue Thoen sthoen@gananda.org

Psychologist: Caryn Armstrong carmstrong@gananda.org

Nurse: Laura Hall RN LHall@gananda.org

Gananda Co-Located Services

Peaceful Schools – Tenneal Eardman, Social Emotional Learning Interventionist

Delphi Rise – Jenna Wainwright Prevention Educator

FCSFL - Therapy, referral is through MTSS meetings utilizing our referral form

Wayne Behavioral Health Network – To refer a student for School-Based Mental Health Services for MH treatment with the identified therapist assigned to Gananda School District, contact WBHN Intake Coordinator at 315-946-5722. Or you can also access outpatient services at our clinic at 1519 Nye Road, Lyons by contacting the above number.

Lyons Central School District

Lyons Middle/High School Main Office: 315.946.2200 x2202/2215

Lyons Elementary School Main Office: 315 946.2240

Lyons Administration:

Superintendent: Dr. Matthew Barr matthewbarr@lyonscsd.org ext. 2015

Assistant Sup. for Business: Mike Pangallo mpangallo@lyonscsd.org ext. 2017

Assistant Superintendent for Instruction: Rhonda Underhill ext. 2304

Director of Special Programs: Laurie Palmisano ext. 2303

Human Resource/Grants: Katrina Henderson khenderson@lyonscsd.org ext. 2013

Middle/High School Principal: Renee Schott rschott@lyonscsd.org ext.2204

Middle/HS Assistant Principal/Athletic Director Mr. Zac Young ext. 2020

Elementary School Principal: Christine Taylor ext. 3501

Elementary School Assistant Principal: Heather Randell ext. 3251

Community Schools Principal: Libarid (Libo) Alexanian ext. 2018

Lyons In House Support Staff:

ES Counseling: Amy Buel abrown1@lyonscsd.org ext. 3263

ES Psychologist: Jill Norris jnorris2@lyonscsd.org ext. 3228

Counselor 7-12: Cristi Kuhn ckuhn@lyonscsd.org ext. 2114

Counseling: Vanessa Riggi vriggi@lyonscsd.org ext. 2206

Tracy Migliore tmigliore@lyonscsd.org ext. 2205

Psychologist: Jesse Strazzabosco jstrazzabosco@lyonscsd.org ext. 2209

MS/HS Nurse: Jessica Buisch RN jbuisch@lyonscsd.org ext. 2504

ES Nurse: Alecia Young RN, BSN ext. 3504

ES Physical Therapy: Sarah Smith ext. 3256

ES Occupational Therapy: Hope Murray ext. 3256

Food Service Manager: Jennifer Tyler ext. 3346/2229

Lyons Co-Located Services:

Peaceful Schools – Jessica Sepulveda, Social Emotional Learning Interventionist

Delphi Rise - Denise Marr, Prevention Counselor/Educator - dmarr@delphirise.org

ES School Based Wayne Behavioral Health Clinic Therapist: Lindsey Mercurio ES 3262, MSHS 2207

Or contact WBHN Intake Coordinator at 315-946-5722. You can also access outpatient services at our clinic at 1519 Nye Road, Lyons by contacting the above number.

ES School Based Advocate/Prevention Specialist: Leslie Ohman ext. 3206

My Brothers Keeper – Mark Franklin ext. 2134

FCSFL –Advocacy and Therapy, referral is through MTSS meetings utilizing our referral form. Leslie Ohman ext. 3260

Marion Central School District

Marion Administration and In-House Support Staff

Marion District Office **315-926-2300**

Superintendent: Ellen Lloyd elloyd@marioncs.org

Marion Elementary School Main Office **315.926.4256**

Elementary Principal: Casey Steiner csteiner@marioncs.org

Interim PK-12 Assistant Principal: Anna Harasimowicz aharasimowicz@marioncs.org

Marion Elementary School Counseling:

Psychologists: Jennifer Rosa jrosa@marioncs.org Melissa Walker mwalker@marioncs.org

Nurse: Eliza Weis FNP eweis@marioncs.org **315.926.2431**

Counseling: Abigail Canello acantello@marioncs.org

Social Work: Marissa Holloway mholloway@marioncs.org

Marion Junior/Senior High School Main Office **315.926.4228**

Principal: Shane Dehn sdehn@marioncs.org

Interim PK-12 Assistant Principal: Anna Harasimowicz aharasimowicz@marioncs.org

Marion Junior/Senior High School Counseling Office: **315.926.2400**

Counseling: Emily Johnson ejohnson@marioncs.org

Karen Livingston klivingston@marioncs.org

Social Work: Kaela Sittig ksittig@marioncs.org

Psychologist: Ashley Maynard Ashley.maynard@marioncs.org

Nurse: Lauren Penders RN, BSN lpenders@marioncs.org **315.926.2406**

Nurse Float K-12: Cara Carr LPN ccarr@marioncs.org

Marion Co-Located Services

Delphi Rise – Tom Weaver, Prevention Educator

Wayne Behavioral Health Network – To refer a student for School-Based Mental Health Services for MH treatment with the identified therapist assigned to Marion School District, contact WBHN Intake Coordinator at 315-946-5722. Or you can also access outpatient services at our clinic at 1519 Nye Road, Lyons by contacting the above number.

Newark Central School District

Perkins School UPK-2nd Grade Main Office: 315.332.3315

Principal: Peter Czerkas peter.czerkas@newarkcsd.org

Assistant Principal: MaryKate Wilbert marykate.wilbert@newarkcsd.org

School Psychologist: Bryan Malchoff Bryan.Malchoff@newarkcsd.org

School Counselor: Olivia Anderson Olivia.Anderson@newarkcsd.org

School Social Worker: Chelsea Shaw Chelsea.Shaw@newarkcsd.org

Nurse: Robin Pacello, RN robin.pacello@newarkcsd.org 315-332-3312

Lincoln School UPK – 2nd Grade Main Office: 315.332.3342

Principal: Kari Hamelinck Kari.hamelinck@newarkcsd.org

Assistant Principal: MaryKate Wilbert marykate.wilbert@newarkcsd.org

School counselor: Kris Anderson kris.anderson@newarkcsd.org

School Social Worker: Rebecca Adams rebecca.adams@newarkcsd.org

SHAPE Psychologist : Melissa VanTyle Melissa.vantyle@newarkcsd.org

Nurse: Lisa Williams, LPN lisa.williams@newarkcsd.org315-332-3349

Kelley School Main Office: 315.332.3326

Principal: Nate Goodness Nate.Goodness@newarkcsd.org

Asst. Principal: Christina Sullivan christina.sullivan@newarkcsd.org

School Psychologist: Lyndsey.yonker@newarkcsd.org

School Counselor: Megan Pierce Megan.pierce@newarkcsd.org

School Behavior Specialist: Melissa Emerson melissa.emerson@newarkcsd.org

SHAPE Psychologist: Christopher Mykins Christopher.mykins@newarkcsd.org

Nurse: Carlie Meyer, RN carlie.meyer@newarkcsd.org315.332.3323

Newark Middle School Grades 6th – 8thMain Office: 315.332.3290

Principal: John Ginter john.ginter@newarkcsd.org

Assistant Principal: Melanie Meyer melanie.meyer@newarkcsd.org

Counselor Class of 2028: Matt May Matthew.may@newarkcsd.org

Counselor Class of 2029: Stefan Uveges Stefan.Uveges@newarkcsd.org

Counselor Class of 2030: Jessica Orchard jessica.orchard@newarkcsd.org

REDS Room School Social Worker: Katherine Davison Katherine.davison@newarkcsd.org

Behavior Specialist: Rebecca Battle Rebecca.battle@newarkcsd.org

UPK-12 School Social Worker: Julia Solan Julia.solan@newarkcsd.org

Nurse: Tanya Bement, LPN Tanya.bement@newarkcsd.org

Newark High School Grades 9-12 Main Office: 315.332.3240

Principal: Kelly Zielke Kelly.zielke@newarkcsd.org

Asst. Principal: Joe Canori joseph.canori@newarkcsd.org

Asst. Principal: Addie Klaehn Addie.Klaehn@newarkcsd.org

Athletic Director: Jonathan Mastin Jonathan.mastin@newarkcsd.org

Counselor A-B: Danielle Mcgavisk danielle.mcgavisk@newarkcsd.org

Counselor C-H: Caty Hugunine cathryn.hugunine@newarkcsd.org

Counselor I-P: Sue Gardner sue.gardner@newarkcsd.org

Counselor Q-Z: Stephanie Specht stephanie.specht@newarkcsd.org

School Psychologist: Kristin Leonard kristin.leonard@newarkcsd.org

School Psychologist: Rene Sinicropi rene.sinicropi@newarkcsd.org

Prevention Counselor: Krystal Crawford krystal.crawford@newarkcsd.org

Nurse: Inger Rothpearl, RN inger.rothpearl@newarkcsd.org315-332-3244

Nurse: Robyn Monahan, LPN robyn.monahan@newarkcsd.org 315-332-3253

Newark Co-Located Services

Catholic Charities – Lincoln and Perkins school only! To refer a student for school based mental health services, please connect with building admin or counselor.

Peaceful Schools – ES: Rebecca Fisher, Social Emotional Learning Interventionist

MS: Elizabeth Knapp, Social Emotional Learning Interventionist

HS: Beth Burdick, Social Emotional Learning Interventionist

Delphi Rise – Nick Highland

Wayne Behavioral Health Network – To refer a student for School-Based Mental Health Services for MH treatment with the identified therapist assigned to Newark School District, contact WBHN Intake Coordinator at 315-946-5722. Or you can also access outpatient services at our clinic at 1519 Nye Road, Lyons by contacting the above number.

North Rose-Wolcott Central School District

North Rose-Wolcott Elementary School Main Office: 315.587.4005

Principal: Christie Graves cgraves@nrwcs.org

Assistant Principal: Joe Canori jcanori@nrwcs.org

North Rose-Wolcott Middle School.....Main Office: 315.594.3130

Principal: Crystal Rupp Crupp@nrwcs.org

Assistant Principal: Scott Hassall Shassall@nrwcs.org

North Rose-Wolcott High School..... Main Office: 315.594.3100

Principal: Scott Bradley sbradley@nrwcs.org

Alternative School Principal (Cougar Ops): Mark Mathews mmathews@nrwcs.org

Assistant Principal: TBA

North Rose-Wolcott In-House Support Staff

Nurse Elementary School UPK-4 : Karen Black kblack@nrwcs.org 315-587-2900

Nurse Middle School gr. 5-8 Colleen Barron cbarron@nrwcs.org 315-594-4121 ext 2112

Nurse High School Gr. 9-12 Vickie Randall RN vrandall@nrwcs.org

Nurse Float Mikayla Stanley Mstanley@nrwcs.org

Optimal Health Coordinator upk-12 Stephanie Humbert RN, BSN shumbert@nrwcs.org

North Rose-Wolcott Co-Located Services

Delphi Rise – Sara Pierce - Prevention Counselor/Educator

FCSFL - Advocacy and Therapy, referral is through MTSS meetings utilizing our referral form

Wayne Behavioral Health Network – To refer a student for School-Based Mental Health Services for MH treatment with the identified therapist assigned to North Rose-Wolcott School District, contact WBHN Intake Coordinator at 315-946-5722. Or you can also access outpatient services at our clinic at 1519 Nye Road, Lyons by contacting the above number.

Palmyra-Macedon Central School District

Pal-Mac District Office 315-597-3400

Director of Special Services: Joan Karnisky joan.karnisky@palmaccsd.org

Community and Family Outreach Coordinator: Kimberly Stewart kimberly.stewart@palmaccsd.org

Director of School Safety: John Colella john.colella@palmaccsd.org

Trauma Informed School Coordinator: Tane Robinson tane.robinson@palmaccsd.org

Pal-Mac Primary School 315-597-3400

School Counselor: Victoria Blazey victoria.blazey@palmaccsd.org

School Psychologist: Dr. Karin Giudici karin.giudici@palmaccsd.org

School Psychologist: Julie Branieki julie.branieki@palmaccsd.org

Behavior Specialist: Jaymee Kramer jaymee.kramer@palmaccsd.org

Nurse : Cassandra Tice R.N. cassandra.tice@palmaccsd.org 315-597-3400

Nurse: Justine Ramos L.P.N. justine.ramos@palmaccsd.org 315-597-3400

Dean of Students: Wendy Ellis wendy.ellis@palmaccsd.org 315-597-3400

Pal-Mac Intermediate School 315-597-3400

School Counselor: Darci Perrotta darci.perrotta@palmaccsd.org

Intermediate School School Psychologist: Mary-Lynn McHugh marylynn.mchugh@palmaccsd.org

School Psychologist (8:1:1 Classroom): Adrienne Nolan adrienne.nolan@palmaccsd.org

Behavior Specialist: Jaymee Kramer jaymee.kramer@palmaccsd.org

Nurse: Lauren Baker R.N. lauren.baker@palmaccsd.org

Dean of Students: Tane Robinson tane.robinson@palmaccsd.org

Pal-Mac Middle School 315-597-5400

School Counselor: Rose Zinkowski rose.zinkowski@palmaccsd.org

School Counselor: Hayley Chase hayley.chase@palmaccsd.org

School Psychologist : Sarah Larmann sarah.larmann@palmaccsd.org

School Psychologist (.5): Kori Gordner kori.gordner@palmaccsd.org

School Psychologist (8:1:1 Classroom): Kristin Dehmler kristin.dehmler@palmaccsd.org

Nurse: Laura Kubasiewicz R.N. laura.kubasiewicz@palmaccsd.org

Dean of Students: Colleen Moquin colleen.moquin@palmaccsd.org

Pal-Mac High School 315-597-5400

School Counselor: Lindsay Daniel lindsay.daniel@palmaccsd.org

School Counselor: Jennifer Narum jennifer.narum@palmaccsd.org

School Counselor: Maureen Harris maureen.harris@palmaccsd.org

School Psychologist: Rachael Sando Rachel.sando@palmaccsd.org

School Psychologist (.5): Katie Crane kathryn.crane@palmaccsd.org

High School Behavior Specialist (.5): Katie Crane kathryn.crane@palmaccsd.org

High School Nurse: Laura Kubasiewicz R.N. laura.kubasiewicz@palmaccsd.org

High School Dean of Students: Neil Fralick neil.fralick@palmaccsd.org

Pal-Mac Co-Located Services

Delphi Rise – Tom Weaver - Prevention Educator

Catholic Charities of Wayne County – Early Intervention Programming

FACT – Families and Communities Together

FCSFL – Therapy, referral is through MTSS meetings utilizing our referral form

Wayne Behavioral Health Network – To refer a student for School-Based Mental Health Services for MH treatment with the identified therapist assigned to Pal-Mac School District, contact WBHN Intake Coordinator at 315-946-5722. Or you can also access outpatient services at our clinic at 1519 Nye Road, Lyons by contacting the above number.

Red Creek Central School District

Red Creek School Administration:

M.W. Cuyler Elementary School..... Main Office: 315.754.2100

Principal: Dennis Taylor dennis.taylor@rccsd.org

Red Creek Middle School..... Main Office: 315.754.2070

Principal: Brian Smiley Brian.Smiley@rccsd.org

Red Creek High School..... Main Office: 315.754.2040

Principal (Interim): Patrick Wallace Patrick.Wallace@rccsd.org

Vice Principal (MS/HS): Robert Carter Robert.Carter@rccsd.org

District Superintendent: Matthew VanOrman Matthew.Vanorman@rccsd.org

Assistant Superintendent of Curriculum and instruction: Jennifer DeVinney Jennifer.DeVinney@rccsd.org

District MTSS Coordinator: Haley Bibee Haley.bibee@rccsd.org

Red Creek in House Support

Elementary Nurse: Kristy Smith RN Kristy.Smith@rccsd.org 315.754.2156

Elementary School Counselor: Kasey Evans kasey.evans@rccsd.org 315.754.2050

Elementary Social Worker: Sharon Rosati Sharon.rosati@rccsd.org 315.754.2040 x4256

Elementary Psychologist: Ashlee Fairchild* ashlee.fairchild@rccsd.org 315.754.2100 x4250

MS Counselor: Katheryn Armstrong Katheryn.armstrong@rccsd.org 315.754.2054

HS Counselor: Shayla Pasker shayla.pasker@rccsd.org 315.754.2073

MS/HS Social Worker: Sharon Rosati Sharon.rosati@rccsd.org 315.754.2040 x4256

MS/HS School Psychologist: Kristin Arnone* Kristin.arnone@rccsd.org 315.754.2023

MS/HS Nurse: Gloria Parsnow RN gloria.parsnow@rccsd.org 315.754.2158

*DASA Coordinators

Red Creek Co-Located Services

Peaceful Schools – Sam Stagles, Social Emotional Learning Interventionist

Amy Sanzotta, Social Emotional Learning Interventionist

Wayne Behavioral Health Network – Melissa Lochner Melissa.Lochner@rccsd.org or

mlochner@co.wayne.ny.us, or contact WBHN Intake Coordinator at 315-946-5722. You can also access outpatient services at our clinic at 1519 Nye Road, Lyons by contacting the above number.

Sodus Central School District

Sodus Elementary School.....Main Office: 315.483.5282

Principal: Jacquelyn Mader jmader@soduscscsd.org 315-483-5226

Elementary/Intermediate Assistant Principal : Cassandra Musolino cmusolino@soduscscsd.org 315-483-5275

Elementary School Psychologist: Colleen Blunden cbluden@soduscscsd.org 315-483-5282 x3200

Elementary School Social Worker: Deb Palmer dpalmer@soduscscsd.org 315-483-5282 x3201

Elementary School Nurse: Darcy Davidson RN ddavidson@soduscscsd.org 315-483-5230

Elementary Crisis Intervention Teacher Asst; Tracy Cincinello tcincinello@soduscscsd.org
315-483-5282 x3202

Sodus Intermediate SchoolMain Office: 315-483-5242

Intermediate School Principal: Megann Johnson mjohnson5@soduscscsd.org 315-483-5206

Intermediate School Dean of Students: Jim Sergeant jsergeant@soduscscsd.org 315-483-5221

Intermediate School Psychologist: Stephen Humbert shumbert@soduscscsd.org 315-483-5212 x2101

Intermediate School Psychologist/Counselor: Michelle Bucenec mbucenec@soduscscsd.org
315-483-5232

Intermediate School Nurse: Rebecca Bourne rbourne@soduscscsd.org 315-483-5224

Intermediate School Crisis Intervention Teacher Assistant: Zachary Montes zmontes@soduscscsd.org
315-483-5212 x6208

Sodus Junior/Senior High School.....Main Office: 315.483.5261

Jr. Sr. High School Principal: Tina Peets tpeets@soduscscsd.org 315-483-5203

Jr. Sr. High School Assistant Principal: Carmen Gumina cgumina@soduscscsd.org 315-483-5261

Jr. Sr. High School Administrative Intern: Audrey Sowell asowell@soduscscsd.org 315-483-5214

Jr. Sr. High School Dean of Students

Jr. Sr. High School Guidance Director/Counselor: Colleen Sheahen csheahen@soduscscsd.org
315-483-5280 x 6122

Jr. Sr. High School Psychologist: Julie DeRoo jderoo@soduscscsd.org 315-483-5280 x 6125

Jr. Sr. High School Guidance Counselor: Meredith Thiell mthiell@soduscscsd.org 315-483-5280 x 6123

Jr. Sr. High School Social Worker: Laura Hayton-Oechsle loechsle@soduscscsd.org 315-483-5241

Jr. Sr. High School Nurse: Jackqueline Budinger RN jbudinger@soduscscsd.org 315-483-5215

Jr. Sr. High School Crisis Intervention Teacher Assistant: Sadie Doyle sdoyle@soduscscsd.org
315-483-5280 x 6140

Jr. Sr. High School Crisis Intervention Teacher Assistant: Chris Wilbur cwilbur@soduscscsd.org
315-483-5280 x 6301

Sodus District Staff:

District Wide Superintendent: Nelson Kise nkise@soduscsd.org 315-483-5252

District Wide Asst Superintendent of Curriculum & Instruction: Dr. Heather Uetz
huetz@soduscsd.org 315-483-5207

District Wide Director of Student Services: Joseph Keeney jkeeney@soduscsd.org 315-483-5207

District Wide Director of Instructional Technology: Tim Padden tpadden@soduscsd.org 315-483-5269

District Wide Director of Athletics Health and PE/Wellness Committee: Mike Magin
mmagin@soduscsd.org 315-483-5216

District Wide Community Schools Director: Jay Roscup jroscup@soduscsd.org
315-527-5280 x 6546

District Wide Health Integration Specialist: Jill Harper jharper@soduscsd.org 315-483- 5280 x 6918

District Wide Mental Health Integration Specialist: Amanda Roberts aroberts@soduscsd.org
315-427-0779

District Wide Director of Grants Valerie Fanning: vfanning@soduscsd.org 315-483-5238

District Wide MTSS Coordinator: Kristen Defeo kdefeo@soduscsd.org 315-483-5280 x 6918

District Wide School Resource Officer: Deputy Christina Denniston cdenniston@soduscsd.org
315-483-5256

District Wide Family and Community Engagement Director: Nelly Edinger nedinger@soduscsd.org
315-483-5249

Sodus Co-Located Services

Catholic Charities - College Bound Coordinator-High School: Teresa Gable teresa.gable@dor.org
315-331-4867

Community Schools Peaceful Schools: Ed Rose erose@soduscsd.org 315-483-5238

Delphi Rise –Prevention Educator: Jenna Wainwright jwainwright@delphirise.org 585-467-2230

Delphi Rise – LMHC/Prevention Educator: Jackie Petzing jpetzing@soduscsd.org 315-483-5277

Family Counseling Services of the Finger Lakes – Advocacy and Therapy: referral is through MTSS meetings utilizing our referral form;

Advocate Abi Wentz awentz@soduscsd.org 315-483-5280 x 6816

Advocate Katie Young kyoung@soduscsd.org 315-483-5282 x 3122

Therapist Laura Alexander lalexander@soduscsd.org 315-483-5238

Community Schools Coordinator FLCAP: Tammy Thiel tthiel@soduscsd.org 315-483-5238

Community Schools FLCAP: Nina Bishop nbishop@soduscsd.org 315-483-5282 x 3176

Optimal Health Coordinator FLCAP: Leah Grzyboski leah.grzyboski@waynecap.org

Social Emotional Learning Interventionist Peaceful Schools: Amanda Burman aburman@soduscsd.org
315-483-5282 x 3176

Wayne Behavioral Health Network – LMHC Nicole Yager nyager@soduscsd.org 315-483-5276, or you can also access outpatient services at our clinic at 1519 Nye Road, Lyons by contacting the above number.

Wayne Central School District

Wayne Primary SchoolMain Office: 315.524.1150

Principal: Mitch Daly mdaly@waynecsd.org

Wayne Elementary School..... Main Office: 315.524.1130

Principal: Donna Rizzo drizzo@waynecsd.org

Wayne Middle School Main Office: 315.524.1080

Principal: Kevin Page kpage@waynecsd.org

Assistant Principal: Natalie Sonnevile nsonnevile@waynecsd.org

Assistant Principal: Christopher Shaffer cshaffer@waynecsd.org

Wayne High School Main Office: 315.524.1050

Principal: Jason Berger jberger@waynecsd.org

Assistant Principal: Nathan Goodness ngoodness@waynecsd.org

Assistant Principal: Jacqueline Senecal jseascal@waynecsd.org

Wayne In-House Support Staff

Wayne Primary School

Nurse: Janelle Drexler, R.N.

Counselor: Joan Prevost

School Psychologist: Jennifer Spina

Wayne Elementary School

Nurse: Angela Marcellus

Counselor: Julie Stanton

School Psychologist: Anne Wigent

Wayne Middle School

Nurse: Antoinette Harris

Counselor: Melanie Cerra, Phil Corleto, Shari Stone-Fredericks

School Psychologist: Melissa Maracle

Wayne High School

Nurse: Kristin Parker

Counselor: Lisa Conner, Kelly Gallup, Kimberly Sherwin, Cahty Stohr

School Psychologist: Marisa Malone

Wayne Co-Located Services

Delphi Rise – Jocelyn Rivas – Prevention Educator/Counselor

Wayne Behavioral Health Network – To refer a student for School-Based Mental Health Services for MH treatment with the identified therapist assigned to Wayne School District, contact WBHN Intake Coordinator at 315-946-5722. Or you can also access outpatient services at our clinic at 1519 Nye Road, Lyons by contacting the above number.

Williamson Central School District

Williamson District Office.....Main office: 315-589-9661

Superintendent: Marygrace Mazzullo mmazzullo@williamsoncentral.org

Assistant Superintendent: Rachel Liberatore RLiberatore@williamsoncentral.org

Williamson Elementary School.....Main Office: 315-589-9668

Principal: Ellen Saxby esaxby2@williamsoncentral.org

Assistant Principal: Jessica Craft jcraft@williamsoncentral.org

Williamson Middle School.....Main Office: 315-589-9665

Principal: Kathryn Taylor ktaylor@williamsoncentral.org

Assistant Principal: Bryon Rockow brockow@williamsoncentral.org

Williamson High School.....Main Office: 315-589-9621

Principal: Kate Avery kavery@williamsoncentral.org

Assistant Principal: Michael Pray mpray@williamsoncentral.org

Williamson In-House Support

ES Counselor: Sean Spooner sspooner@williamsoncentral.org

MS Counselors: Kristen Collins kcollins@williamsoncentral.org Paula Matter pMatter@williamsoncentral.org

HS Counselors: Steve Parshall sparshall@williamsoncentral.org Mary Weil mweil@williamsoncentral.org

Elementary School Registered Nurse: Hayley Musclow RN hmusclow@williamsoncentral.org

MS Licensed Practical Nurse: Lynn Wersinger lwrsinger@williamsoncentral.org

HS Registered Nurse: Beth Moore RN BSN bmoore@williamsoncentral.org

Psychologists: Leigh Prescott lprescott@williamsoncentral.org Alaina Tripp atripp@williamsoncentral.org

Social Workers: Ingrid Wander iwander@williamsoncentral.org Amy Hanna ahanna@williamsoncentral.org

Director of Pupil Personnel Services: Kelly Colling kcolling@williamsoncentral.org

Intervention Coordinator: Karen Hoody khoody@williamsoncentral.org

Williamson Co-Located Services

Family Counseling Service of the Finger Lakes: Olivia Kime okime@williamsoncentral.org

referral is through MTSS meetings utilizing our referral form

Wayne Behavioral Health Network: Autumn Cieplinski acieplinski@williamsoncentral.org

Or you can also access outpatient services at our clinic at 1519 Nye Road, Lyons by contacting the above number.

Wayne Education Center

Wayne FL BOCES

Wayne Education Center Main Office: 315.589.2400
4440 Ridge Rd, Williamson

WFL BOCES Williamson Administration

Superintendent: Vicma Ramos

Assistant Superintendent for Instruction: Erin Fairben

Wayne Education Center Middle/High School Principal: Jessica Newby (acting principal)

Wayne Education Center Middle/High School Assistant Principal: Greg Maine (acting vice principal)

Behavior Specialist: Carrie Case

WFL BOCES Williamson In House Support Staff

Counseling: Ashlee Liberatore, Julie Gardner, Nicole Bindler, Shara Perez, Kim Sonthana

Psychologist: Connor Delavak, Christine Decker

Nurse: Kerry Crawley LPN

Wayne BOCES Williamson In House Support Staff:

Wayne Behavioral Health Network – To refer a student for School-Based Mental Health Services for MH treatment with the identified therapist assigned to BOCES Educational Center, contact WBHN Intake Coordinator at 315-946-5722. Or you can also access outpatient services at our clinic at 1519 Nye Road, Lyons by contacting the above number.

Wayne County Sheriff's Office-Deputy Brian Steinruck, School Resource Officer