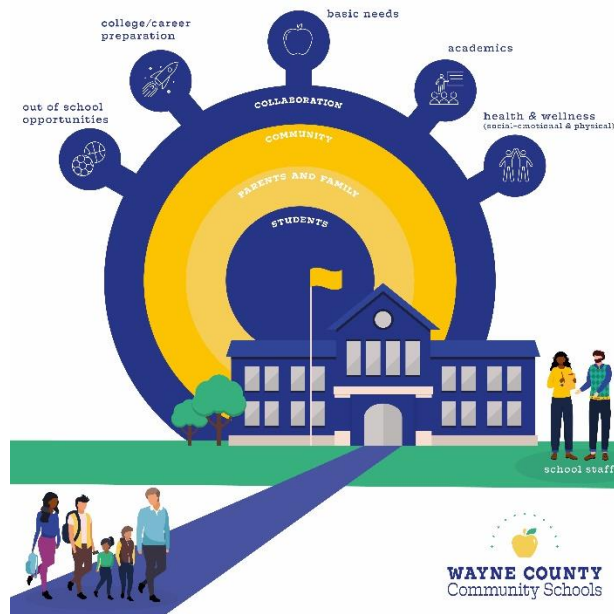


Wayne County Community Schools Resource Map: 2022-2023



Last updated 1.4.23

Next Update – August 2023

Wayne County School Districts

Table of Contents

Clyde Savannah ** Page 3**

Gananda ** Page 4**

Lyons ** Page 5**

Marion ** Page 6**

Newark ** Page 7**

North Rose-Wolcott ** Page 9**

Palmyra-Macedon ** Page 10**

Red Creek ** Page 12**

Sodus ** Page 13**

Wayne ** Page 15**

Williamson ** Page 16**

Wayne Education Center – WFL BOCES ** Page 17**

Clyde-Savannah Central School District

Clyde-Savannah School Administration:

Clyde-Savannah Elementary School Main Office: 315.902.3100
Elem. Principal: Jennifer Kelsey jennifer.kelsey@clydesavannah.org 315.902.3100
Assistant Principal: Erin Wood erin.wood@clydesavannah.org 315.902.3100

Clyde-Savannah Jr. High School Main Office: 315.902.3200
Jr. High Principal: Justin Fries justin.fries@clydesavannah.org 315-902-3200

Clyde-Savannah High School Main Office: 315.902.3050
High School Principal: Dr. Craig Pawlak craig.pawlak@clydesavannah.org
Dir of Special Ed and Pupil Personnel Services - Chris Nicol chris.nicol@clydesavannah.org

Clyde-Savannah In House Support

Elementary School counselor- Justin Allen Justin.allen@clydesavannah.org
Elementary Social Worker-Joseph Dewolf Joseph.dewolf@clydesavannah.org
Preschool Coordinator - Amy Fisher amy.fisher@clydesavannah.org
Elementary Nurse: Kelly Smart, R.N. kelly.smart@clydesavannah.org
Elementary Nurse: Wende Edwards, LPN wende.edwards@clydesavannah.org

MS Registered Nurse: Andrea Roelle andrea.roelle@clydesavannah.org 315-902-3020
Jr. Sr. HS Psychologist: Megan Furman megan.furman@clydesavannah.org 315-902-3050
HS Social Worker: Cari VanStrien cari.vanstrien@clydesavannah.org 315-902-3050

Physical therapy: Morgan Montgomery morgan.montgomery@clydesavannah.org
Occupational Therapy: Allison Williams Allison.williams@clydesavannah.org
Speech Language: Katrina Briggs Katrina.briggs@clydesavannah.org
ENL: Teresa Grigg teresa.grigg@clydesavannah.org Melissa Ridley (part-time ENL)
Melissa.ridley@clydesavannah.org

Clyde-Savannah Co-Located Services

Delphi Rise – Gregg Dougherty-Herman Prevention Educator - gdougherty-herman@delphirise.org

FCSFL - 21st Century Advocacy Support and Prevention Advocacy Support (This is split with Lyons)

Wayne Behavioral Health Network – To refer a student for School-Based Mental Health Services for MH treatment with the identified therapist assigned to Clyde School District, contact WBHN Intake

Coordinator at 315-946-5722. Or you can also access outpatient services at our clinic at 1519 Nye Road, Lyons by contacting the above number.

Gananda Central School District

Richard Mann Elementary School Main Office: 315.986.3521 x1511

Principal: Katy Lumb klumb@gananda.org

Assistant Principal: Melissa Reeves mreeves@gananda.org

Middle School Main Office: 315.986.3521 x2423

Principal: Elliot Butt ebutt@gananda.org

Assistant Principal: Bob Caulkins bcaulkins@gananda.org

Ruben A. Cirillo High School Main Office: 315.986.3521 x3154

Principal: Matthew Mahoney mmahoney@gananda.org

Assistant Principal: Jacki Mader jmader@gananda.org

Gananda In House Support

Richard Mann Elementary School Office: 315 986-3521

Counseling: John Strachan jstrachan@gananda.org

Social Work: Sue Thoen sthoen@gananda.org

Psychologist: Jackie Pedulla jpedulla@gananda.org

Nurse: Deanna Hendricks dhendricks@gananda.org

Gananda Middle School Office: 315 986-3521

Counseling: Cindy Stevens cstevens@gananda.org

Social Work: Sue Thoen sthoen@gananda.org

Psychologist: Caryn Armstrong carmstrong@gananda.org

Nurse: Kim Roach kroach@gananda.org

Ruben A. Cirillo High School Office: 315 986-3521

Counseling: Kristen Kelleher kkelleher@gananda.org & Mary Crelley mcrelley@gananda.org

Social Work: Sue Thoen sthoen@gananda.org

Psychologist: Caryn Armstrong carmstrong@gananda.org

Nurse: Laura Hall LHall@gananda.org

Gananda Co-Located Services

Delphi Rise – Jenna Wainwright Prevention Educator

FCSFL - Therapy, referral is through MTSS meetings utilizing our referral form

Wayne Behavioral Health Network – To refer a student for School-Based Mental Health Services for MH treatment with the identified therapist assigned to Gananda School District, contact WBHN Intake Coordinator at 315-946-5722. Or you can also access outpatient services at our clinic at 1519 Nye Road, Lyons by contacting the above number.

Lyons Central School District

Lyons Middle/High School Main Office: 315.946.2200 x2202

Lyons Elementary School Main Office: 315.946.2200 x3503

Lyons Administration:

Superintendent: Dr. Matthew Barr matthewbarr@lyonscsd.org ext 2010

Assistant Sup. for Business: Mike Pangallo mpangallo@lyonscsd.org ext 2017

Assistant Superintendent for Instruction: Rhonda Underhill – ext 2304

Director of Grants and Human Resource: Laurie Palmisano – ext 2303

Middle/High School Principal: Katrina Henderson - ext 2202

Middle/High School Assistant Principal: Renee Schott - rschott@lyonscsd.org x2203

Middle/HS Assistant Principal/Athletic Director Mr. Zac Young - ext 2020

Elementary School Principal: Christine Taylor - ext 3501

Katie Jo Passero - Elementary School Assistant Principal ext 3248

Community Schools Principal: Libarid Alexanian – ext 2018

Lyons In House Support Staff:

Counseling: Amy Buel abrown1@lyonscsd.org x3263

Psychologist: Jill Norris jnorris2@lyonscsd.org x3228

Counselor 7-12: Cristi Kuhn ckuhn@lyonscsd.org x2114

Counseling: Vanessa Riggi vriggi@lyonscsd.org x2206

Tracy Migliore tmigliore@lyonscsd.org x2205

Psychologist: Jesse Strazzabosco jstrazzabosco@lyonscsd.org x2209

MS/HS Nurse: Jessica Buisch jbuisch@lyonscsd.org x2504

ES Nurse: Alecia Young ayoung@lyonscsd.org x3504

Lyons Co-Located Services:

Delphi Rise - Denise Marr, Prevention Counselor/Educator - dmarr@delphirise.org

FCSFL –Advocacy and Therapy, referral is through MTSS meetings utilizing our referral form. We also have 21st Century Advocacy Support and Prevention Advocacy Support (This is split with Clyde-Savannah)

Wayne Behavioral Health Network – To refer a student for School-Based Mental Health Services for MH treatment with the identified therapist assigned to Lyons School District, contact WBHN Intake Coordinator at 315-946-5722. Or you can also access outpatient services at our clinic at 1519 Nye Road, Lyons by contacting the above number.

Marion Central School District

Marion Administration and In-House Support Staff

Marion District Office315-926-2300

Superintendent: Ellen Lloyd elloyd@marioncs.org

Marion Elementary School Main Office315.926.4256

Interim Elementary Principal: Casey Steiner csteiner@marioncs.org

Interim Assistant Principal: Brianne Raes braes@marioncs.org

Marion Elementary School Counseling: Kaela Sittig ksittig@marioncs.org

Psychologist: Jennifer Rosa jrosa@marioncs.org Melissa Walker mwalker@marioncs.org

Nurse: Eliza Weis eweis@marioncs.org 315.926.2431

Marion Junior/Senior High School Main Office315.926.4228

Principal: Shane Dehn sdehn@marioncs.org

Assistant Principal: Casey Steiner csteiner@marioncs.org

Marion Junior/Senior High School Counseling Office: 315.926.2400

Counseling: Emily Johnson ejohnson@marioncs.org

Karen Livingston kmerrill@marioncs.org

Social Work: Kaela Sittig ksittig@marioncs.org

Psychologist: Ashley Maynard Ashley.maynard@marioncs.org

Nurse: Lauren Penders lpenders@marioncs.org 315.926.2406

Marion Co-Located Services

Delphi Rise – Tom Weaver, Prevention Educator

Wayne Behavioral Health Network – To refer a student for School-Based Mental Health Services for MH treatment with the identified therapist assigned to Marion School District, contact WBHN Intake Coordinator at 315-946-5722. Or you can also access outpatient services at our clinic at 1519 Nye Road, Lyons by contacting the above number.

Newark Central School District

Perkins School UPK-2nd Grade Main Office: 315.332.3315

Principal: Peter Czerkas peter.czerkas@newarkcsd.org
Assistant Principal: MaryKate Wilbert marykate.wilbert@newarkcsd.org
School Psychologist: Bryan Malchoff Bryan.Malchoff@newarkcsd.org
School Psychologist: Lyndsey Yonker Lyndsey.Yonker@newarkcsd.org
School Social Worker: Chelsea Shaw Chelsea.Shaw@newarkcsd.org
Nurse: Robin Pacello, RN 315-332-3312 robin.pacello@newarkcsd.org

Lincoln School UPK – 2nd Grade Main Office: 315.332.3342

Principal: Kari Hamelinck Kari.hamelinck@newarkcsd.org
Assistant Principal: MaryKate Wilbert marykate.wilbert@newarkcsd.org
School counselor: Kris Anderson kris.anderson@newarkcsd.org
School Social Worker: Rebecca Adams rebecca.adams@newarkcsd.org
Nurse: Lisa Williams, LPN 315-332-3349 lisa.williams@newarkcsd.org

Kelley School Main Office: 315.332.3326

Principal: Jeff Hamelinck Jeffery.hamelinck@newarkcsd.org
Asst. Principal: Keary Pender keary.pender@newarkcsd.org
School Psychologist: TBD
School Counselor: Megan Pierce Megan.pierce@newarkcsd.org
School Behavior Specialist: Melissa Emerson melissa.emerson@newarkcsd.org
SHAPE Psychologist: Christopher Mykins Christopher.mykins@newarkcsd.org
Nurse: Carlie Meyer, RN 315 332-3323 carlie.meyer@newarkcsd.org

Newark Middle School Grades 6th – 8th Main Office: 315.332.3290

Principal: John Ginter john.ginter@newarkcsd.org
Assistant Principal: Melanie Meyer melanie.meyer@newarkcsd.org
Admin Intern: Mikey Davanzo Michael.Davanzo@newarkcsd.org
Admin Intern: Christina Sullivan Christina.Sullivan@newarkcsd.org
Counselor: Jessica Orchard jessica.orchard@newarkcsd.org
Counselor: Matt May Matthew.may@newarkcsd.org
Counselor: Stefan Uveges Stefan.Uveges@newarkcsd.org
REDS Room School Social Worker: Katherine Davison Katherine.davison@newarkcsd.org
Behavior Specialist: Rebecca Battle Rebecca.battle@newarkcsd.org

UPK-12 School Social Worker: Julia Solan Julia.solan@newarkcsd.org

Nurse: Annette Adams, LPN 315-332-3305 annette.adams@newarkcsd.org

Newark High School Grades 9-12 Main Office: 315.332.3240

Principal: Kelly Zielke Kelly.zielke@newarkcsd.org

Asst. Principal: TBD

Asst. Principal: Addie Klaehn Addie.Klaehn@newarkcsd.org

Athletic Director: Jonathan Mastin Jonathan.mastin@newarkcsd.org

Counselor: Danielle Mcgavisk danielle.mcgavisk@newarkcsd.org

Counselor: Caty Hugunine cathryn.hugunine@newarkcsd.org

Counselor: Sue Gardner sue.gardner@newarkcsd.org

Counselor: Stephanie Specht stephanie.specht@newarkcsd.org

School Psychologist: Kristin Leonard kristin.leonard@newarkcsd.org

School Psychologist: Rene Sinicropi rene.sinicropi@newarkcsd.org

Prevention Counselor: Krystal Crawford krystal.crawford@newarkcsd.org

Nurse: Inger Rothpearl, RN 315-332-3244 inger.rothpearl@newarkcsd.org

Nurse: Robyn Monahan, LPN 315-332-3253 robyn.monahan@newarkcsd.org

Newark Co-Located Services

Catholic Charities – Lincoln and Perkins school only! To refer a student for school based mental health services, please connect with building admin or counselor.

Delphi Rise – Alexa Bourne-Frazer - Prevention Educator

FCSFL – Therapists in Resiliency Room (Kelley, Middle, and High School), referral process is through administration as an alternative to suspension. Short-term crisis, not ongoing therapy.

Wayne Behavioral Health Network – To refer a student for School-Based Mental Health Services for MH treatment with the identified therapist assigned to Newark School District, contact WBHN Intake Coordinator at 315-946-5722. Or you can also access outpatient services at our clinic at 1519 Nye Road, Lyons by contacting the above number.

North Rose-Wolcott Central School District

North Rose-Wolcott Elementary School..... Main Office: 315.587.4005

Principal: Christie Graves cgraves@nrwcs.org

Assistant Principal: Joe Canori jcanori@nrwcs.org

North Rose-Wolcott Middle School Main Office: 315.594.3130

Principal: Crystal Rupp - Crupp@nrwcs.org

Assistant Principal: Scott Hassall Shassall@nrwcs.org

North Rose-Wolcott High School Main Office: 315.594.3100

Principal: Scott Bradley sbradley@nrwcs.org

Alternative School Principal (Cougar Ops): Mark Mathews mmathews@nrwcs.org

Assistant Principal: **TBA**

North Rose-Wolcott In-House Support Staff

Nurse Elementary School UPK-4 : Elizabeth Decker RN MSN edecker@nrwcs.org

Nurse Middle School gr. 5-8 **TBA** 315-594-4121 ext 2112

Nurse High School Gr. 9-12 Vickie Randall RN vrandall@nrwcs.org

Optimal Health Coordinator upk-12 Stephanie Humbert RN, BSN shumbert@nrwcs.org

North Rose-Wolcott In-House Support Staff

Nurse Elementary School UPK-4 : Elizabeth Decker RN MSN edecker@nrwcs.org

Nurse Middle School gr. 5-8 _____ 315-594-4121 ext 2112

Nurse High School Gr. 9-12 Vickie Randall RN vrandall@nrwcs.org

Optimal Health Coordinator upk-12 Stephanie Humbert RN, BSN shumbert@nrwcs.org

North Rose-Wolcott Co-Located Services

Delphi Rise – Sara Pierce - Prevention Counselor/Educator

FCSFL - Advocacy and Therapy, referral is through MTSS meetings utilizing our referral form

Wayne Behavioral Health Network – To refer a student for School-Based Mental Health Services for MH treatment with the identified therapist assigned to North Rose-Wolcott School District, contact WBHN Intake Coordinator at 315-946-5722. Or you can also access outpatient services at our clinic at 1519 Nye Road, Lyons by contacting the above number.

Palmyra-Macedon Central School District

Pal-Mac District Office 315-597-3400

Director of Special Services Joan Karnisky joan.karnisky@palmaccd.org

Community and Family Outreach Coordinator Kimberly Stewart kimberly.stewart@palmaccd.org

Director of School Safety John Colella john.colella@palmaccd.org

Trauma Informed School Coordinator Tane Robinson tane.robinson@palmaccd.org

Pal-Mac Primary School 315-597-3400

School Counselor Victoria Blazey victoria.blazey@palmaccd.org

School Psychologist Dr. Karin Giudici karin.giudici@palmaccd.org

School Psychologist Nicole Castronovo nicole.castronovo@palmaccd.org

Behavior Specialist Jaymee Kramer jaymee.kramer@palmaccd.org

Nurse Cassandra Tice R.N. cassandra.tice@palmaccd.org 315-597-3400

Nurse Justine Ramos L.P.N. justine.ramos@palmaccd.org 315-597-3400

Dean of Students Wendy Ellis wendy.ellis@palmaccd.org 315-597-3400

Pal-Mac Intermediate School 315-597-3400

School Counselor Darci Perrotta darci.perrotta@palmaccd.org\Intermediate School

School Psychologist Mary-Lynn McHugh marylynn.mchugh@palmaccd.org

School Psychologist (8:1:1 Classroom) Adrienne Nolan adrienne.nolan@palmaccd.org

Behavior Specialist Jaymee Kramer jaymee.kramer@palmaccd.org

Nurse Lauren Baker R.N. lauren.baker@palmaccd.org

Dean of Students Tane Robinson tane.robinson@palmaccd.org

Pal-Mac Middle School 315-597-5400

School Counselor Rose Zinkowski rose.zinkowski@palmaccd.org

School Counselor Hayley Chase hayley.chase@palmaccd.org

School Psychologist Rachael Sando

School Psychologist (.5) Kori Gordner kori.gordner@palmaccd.org

School Psychologist (8:1:1 Classroom) Kristin Dehmler kristin.dehmler@palmaccd.org

Behavior Specialist (.5) Kori Gordner kori.gordner@palmaccd.org

Nurse Laura Kubasiewicz R.N. laura.kubasiewicz@palmacccd.org

Dean of Students Colleen Moquin colleen.moquin@palmacccd.org

Pal-Mac High School 315-597-5400

School Counselor Lindsay Daniel lindsay.daniel@palmacccd.org

School Counselor Jennifer Narum jennifer.narum@palmacccd.org

School Counselor Maureen Harris maureen.harris@palmacccd.org

School Psychologist Rachael Sando

School Psychologist (.5) Katie Crane kathryn.crane@palmacccd.org

High School Behavior Specialist (.5) Katie Crane kathryn.crane@palmacccd.org

High School Nurse Deborah Matzan R.N. deborah.matzan@palmacccd.org

High School Dean of Students Neil Fralick neil.fralick@palmacccd.org

Pal-Mac Co-Located Services

Delphi Rise – Tom Weaver - Prevention Educator

FCSFL – Therapy, referral is through MTSS meetings utilizing our referral form

Wayne Behavioral Health Network – To refer a student for School-Based Mental Health Services for MH treatment with the identified therapist assigned to Pal-Mac School District, contact WBHN Intake Coordinator at 315-946-5722. Or you can also access outpatient services at our clinic at 1519 Nye Road, Lyons by contacting the above number.

Red Creek Central School District

Red Creek School Administration:

M.W. Cuyler Elementary School Main Office: 315.754.2100

Principal: Dennis Taylor dennis.taylor@rccsd.org

Red Creek Middle School Main Office: 315.754.2070

Principal: Matthew VanOrman matthew.vanorman@rccsd.org

Red Creek High School Main Office: 315.754.2040

Principal: Raina Hinman raina.hinman@rccsd.org

Vice Principal (MS/HS): Brian Smiley brian.smiley@rccsd.org

Dir. of Grants and Community Schools: Jennifer DeVinney Jennifer.DeVinney@rccsd.org

Red Creek In House Support

Elementary Nurse: Kristy Smith Kristy.Smith@rccsd.org 315.754.2156

MS/HS Nurse: Gloria Parsnow gloria.parsnow@rccsd.org 315.754.2158

Elementary School Counselor: Kasey Evans kasey.evans@rccsd.org 315.754.2050

Elementary Social Worker: Sharon Rosati Sharon.rosati@rccsd.org 315.754.2040 x4256

Elementary Psychologist: Ashlee Fairchild* ashlee.fairchild@rccsd.org 315.754.2100 x4250

MS Counselor: Katheryn Armstrong Katheryn.armstrong@rccsd.org 315.754.2054

HS Counselor: Shayla Pasker shayla.pasker@rccsd.org 315.754.2073

MS/HS Social Worker: Sharon Rosati Sharon.rosati@rccsd.org 315.754.2040 x4256

MS/HS School Psychologist: Kristin Arnone* Kristin.arnone@rccsd.org 315.754.2023

*DASA Coordinators

Red Creek Co-Located Services

Catholic Charities: Cindy Edmondson cindy.edmondson@rccsd.org 315.754.2100 x4249

Delphi Rise – Kevin Dickes, Prevention Counselor/Educator kdickes@delphirise.org

Wayne Behavioral Health Network – To refer a student for School-Based Mental Health Services for MH treatment with the identified therapist assigned to Red Creek School District, contact WBHN Intake Coordinator at 315-946-5722. Or you can also access outpatient services at our clinic at 1519 Nye Road, Lyons by contacting the above number.

Sodus Central School District

Sodus Elementary School Main Office: 315.483.5282

Principal: Michael Sereno msereno@soduscscsd.org

Elementary School Psychologist Colleen Blunden cbluden@soduscscsd.org

Elementary School Social Worker Deb Palmer dpalmer@soduscscsd.org

Elementary School Nurse Darcy Davidson ddavidson@soduscscsd.org

Elementary Crisis Intervention Teacher Assistant Charlotte Baincbain baincbain@soduscscsd.org

Sodus Intermediate School Main Office: 315.483.5242

Intermediate School Principal: Gene Hoskins ehoskins@soduscscsd.org

Intermediate School Dean of Students Jim Sergeant jsergeant@soduscscsd.org

Intermediate School Psychologist Stephen Humbert shumbert@soduscscsd.org

Intermediate School Psychologist/Counselor Michelle Bucenec mbucenec@soduscscsd.org

Intermediate School Nurse Rebecca Bourne rbourne@soduscscsd.org

Intermediate School Crisis Intervention Teacher Assistant Eric Graves egraves@soduscscsd.org

Sodus Junior/Senior High School Main Office: 315.483.5261

Jr. Sr. High School Principal: Arkee Allen aallen@soduscscsd.org

Jr. Sr. High School Assistant Principal: Tina Peets tpeets@soduscscsd.org

Jr. Sr. High School Principal Arkee Allen aallen@soduscscsd.org

Jr. Sr. High School Assistant Principal Dr. Tina Peets tpeets@soduscscsd.org

Jr. Sr. High School Administrative Intern Megann Johnson mjohnson5@soduscscsd.org

Jr. Sr. High School Dean of Students Brian Dastyck bdastyck@soduscscsd.org

Jr. Sr. High School Guidance Director/Counselor Colleen Sheahen csheahen@soduscscsd.org

Jr. Sr. High School Psychologist Julie DeRoo jderoo@soduscscsd.org

Jr. Sr. High School Psychologist Stephen Humbert shumbert@soduscscsd.org

Jr. Sr. High School Guidance Counselor Meredith Thiell mthiell@soduscscsd.org

Jr. Sr. High School Social Worker Laura Hayton-Oechsle loechsle@soduscscsd.org

Jr. Sr. High School Nurse Jackqueline Budinger jbudinger@soduscscsd.org

Jr. Sr. High School Crisis Intervention Teacher Assistant Ryan Grinnell rgrinnell@soduscscsd.org

Jr. Sr. High School Crisis Intervention Teacher Assistant Chris Wilbur cwilbur@soduscscsd.org

Sodus District Staff:

District Wide Superintendent Nelson Kise

District Wide Assistant Superintendent of Curriculum & Instruction Dr. Heather Uetz

District Wide Director of Student Services Joseph Keeney

District Wide Director of Instructional Technology Tim Padden

District Wide Director of Athletics Health and PE/Wellness Committee Mike Magin

District Wide Community Schools Director Jay Roscup

District Wide Jill Harper Health Integration Specialist

District Wide Dr. Hennesey Lustica Community Schools Mental Health Director

District Wide Valerie Fanning Director of Grants

District Wide Kristen Defeo MTSS Coordinator

Sodus Co-Located Services

Catholic Charities - College Bound Coordinator-High School Teresa Gable teresa.gable@dor.org

Catholic Charities - CCIP-Intermediate School Cindy Edmondson Cynthia.Edmondson@dor.org

Community Advocate Peaceful Schools - Ed Rose erose@soduscsd.org

Delphi Rise – Jenna Wainwright Prevention Educator & Jackie Petzing Prevention Counselor/Educator

FCSFL – Advocacy and Therapy, referral is through MTSS meetings utilizing our referral form; Advocate Family Counseling Services of the Finger Lakes - Amanda Wilson awilson@soduscsd.org; Family Counseling Services of the Finger Lakes Therapist Laura Alexander laalexander@soduscsd.org

Home School Coordinator Wayne County Action Program Tammy Thiel tthiel@soduscsd.org

Wayne Behavioral Health Network – To refer a student for School-Based Mental Health Services for MH treatment with the identified therapist assigned to Sodus School District, contact WBHN Intake Coordinator at 315-946-5722. Or you can also access outpatient services at our clinic at 1519 Nye Road, Lyons by contacting the above number.

Wayne Central School District

Wayne Primary School Main Office: 315.524.1150

Principal: Mitch Daly mdaly@waynecsd.org

Wayne Elementary School Main Office: 315.524.1130

Principal: Donna Rizzo drizzo@waynecsd.org

Wayne Middle School Main Office: 315.524.1080

Principal: Kevin Page kpage@waynecsd.org

Assistant Principal: Natalie Sonnevile nsonnevile@waynecsd.org

Assistant Principal: Christopher Shaffer cshaffer@waynecsd.org

Wayne High School Main Office: 315.524.1050

Principal: Jason Berger jberger@waynecsd.org

Assistant Principal: Nathan Goodness ngoodness@waynecsd.org

Assistant Principal: Jacqueline Senecal jsenecal@waynecsd.org

Wayne In-House Support Staff

Wayne Primary School

Nurse: Janelle Drexler, R.N.

Counselor: Joan Prevost

School Psychologist: Jennifer Spina

Wayne Elementary School

Nurse: Angela Marcellus

Counselor: Julie Stanton

School Psychologist: Anne Wigent

Wayne Middle School

Nurse: Antoinette Harris

Counselor: Melanie Cerra, Phil Corleto, Shari Stone-Fredericks

School Psychologist: Melissa Maracle

Wayne High School

Nurse: Kristin Parker

Counselor: Lisa Conner, Kelly Gallup, Kimberly Sherwin, Cahty Stohr

School Psychologist: Marisa Malone

Wayne Co-Located Services

Delphi Rise – Jocelyn Rivas – Prevention Educator/Counselor

Wayne Behavioral Health Network – To refer a student for School-Based Mental Health Services for MH treatment with the identified therapist assigned to Wayne School District, contact WBHN Intake Coordinator at 315-946-5722. Or you can also access outpatient services at our clinic at 1519 Nye Road, Lyons by contacting the above number.

Williamson Central School District

Williamson Elementary School Main Office: 315.589.9668

Principal: Ellen Saxby esaxby2@williamsoncentral.org

Assistant Principal: Karen Hoody khoody@williamsoncentral.org

Williamson Middle School Main Office: 315.589.9665

Principal: John Fulmer jfulmer@williamsoncentral.org

Assistant Principal: Kathryn Taylor ktaylor@williamsoncentral.org

Williamson High School Main Office: 315.589.9621

Principal: Kathryn Avery kavery@williamsoncentral.org

Assistant Principal: Hilary Chaya hchaya@williamsoncentral.org

Williamson In-House Support Staff

Williamson Co-Located Services

Delphi Rise – Bridget Dougherty-Herman, Prevention Educator

FCSFL –Therapy, referral is through MTSS meetings utilizing our referral form

Wayne Behavioral Health Network – To refer a student for School-Based Mental Health Services for MH treatment with the identified therapist assigned to Williamson School District, contact WBHN Intake Coordinator at 315-946-5722. Or you can also access outpatient services at our clinic at 1519 Nye Road, Lyons by contacting the above number.

Wayne Education Center

Wayne FL BOCES

Wayne Education Center Main Office: 315.589.2400
4440 Ridge Rd, Williamson

WFL BOCES Williamson Administration

Superintendent: Vicma Ramos

Assistant Superintendent for Instruction: Erin Fairben

Wayne Education Center Middle/High School Principal: Jessica Newby (acting principal)

Wayne Education Center Middle/High School Assistant Principal: Greg Maine (acting vice principal)

Behavior Specialist: Carrie Case

WFL BOCES Williamson In House Support Staff

Counseling: Ashlee Liberatore, Julie Gardner, Nicole Bindler, Shara Perez, Kim Sonthana

Psychologist: Connor Delavak, Christine Decker

Nurse: Kathy Logan

Wayne BOCES Williamson In House Support Staff:

Wayne Behavioral Health Network – To refer a student for School-Based Mental Health Services for MH treatment with the identified therapist assigned to BOCES Educational Center, contact WBHN Intake Coordinator at 315-946-5722. Or you can also access outpatient services at our clinic at 1519 Nye Road, Lyons by contacting the above number.

Wayne County Sheriff's Office-Deputy Brian Steinruck, School Resource Officer